

# FAA Office of Airports Update – 20:1 Obstacle Update

Presented to: Airports Conference at Hershey

By: John R. Dermody, P.E., Deputy Director,  
Office of Airport Safety and Standards

Date: March 22, 2016



Federal Aviation  
Administration



# Topics

- **Collaboration to clear Approach & Departure Surfaces**
- **Airports GIS (AGIS) Surface Analysis and Visualization (SAV) Tool**




# Roles/Responsibilities Memo

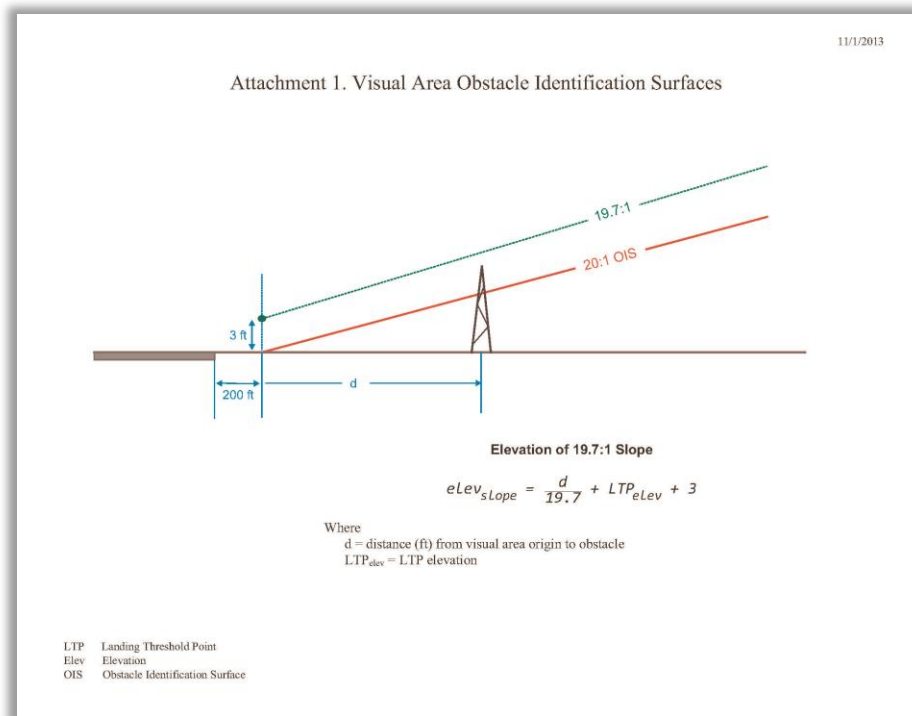
- **Released August 18, 2015**
  - *“Reminder of Responsibilities for FAA Personnel and Airport Sponsors for Protecting Approach and Departure Surfaces”*
- **Primary Updates from Interim Policy:**
  - Revised 20:1 surface per AFS memo
  - Responsibilities are more clearly defined
    - Regions and ADOs
    - OSG FPT
  - Obstacle valid/invalid is more clearly defined
  - OSG FPT will provide monthly reports to the RAPT



# ARP Roles & Responsibilities

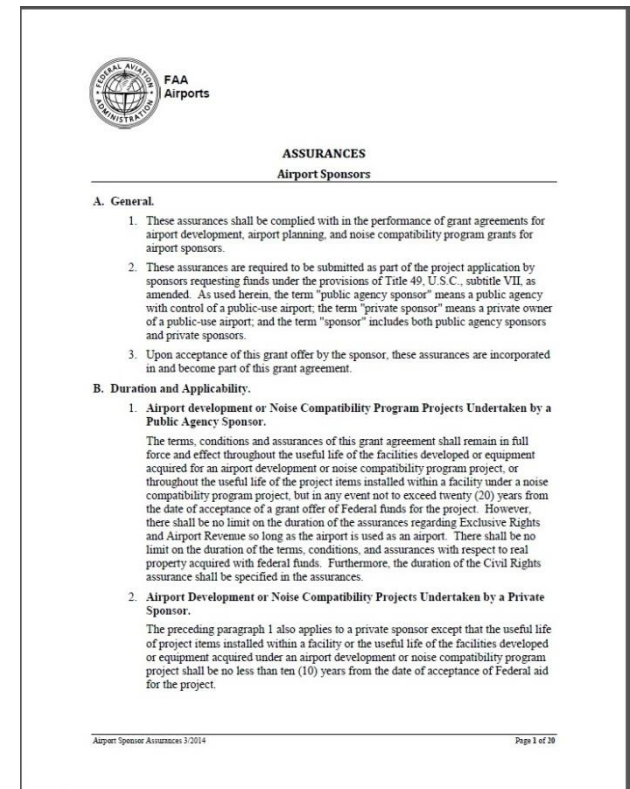
- **Planning Functions**

- Identify/mitigate obstacles  Master Plans
- Airport Sponsor is ultimately responsible



# Airport Sponsor Roles & Responsibilities

- **Responsibility derived from Grant Assurances**
  - 19: Operations and Maintenance
  - 20: Hazard Removal
  - 21: Compatible Land Use
  - 29: ALP
- **Not limited to 20:1 surface!**



# Airport Sponsor Roles & Responsibilities

- **Obstacle Action Plan (OAP)**
  - Developed by the Sponsor w/ ADO guidance
  - Incorporate into annual planning, airspace or general meetings w/ Sponsor
  - Develop mitigation projects
  - Varies in complexity
  - Demonstrates phases necessary for mitigation
  - Demonstrates actions to maintain clear approaches
  - Submit in OE/AAA for LOB review



# Moving forward

- **The interim policy has been in place for over 2 years**
- **The FAA Flight Procedures Team has now reviewed all of the published procedures**
- **We are in the assessment phase of the interim 20:1 policy**
- **Looking to see what worked, what didn't work well, and how we can obtain compliance**



# AGIS Surface Analysis and Visualization (SAV) Tool - Fully operational

- 20:1 and GQS Surface Visualization
- Obstacle Data Visualization and Validation
- Removal of obstacles from the FAA database that are no longer valid
- Penetration & Mitigation reports direct email to FPT
- Delegate to consultant
- Export reports
- Live nationwide





# Airports GIS - Surface Analysis and Visualization (SAV) Tool

- Fully operational in all regions
  - Airports can now see all obstacles, validate, mitigate, & communicate with the Flight Procedures Team (FPT)

Surface Analysis and Visualization - Map

Summary

Airport: PWM PORTLAND INTL JETPORT  
City: PORTLAND

Utilities

Export Verification  
Export Penetration Report  
Export Compliance Plan  
Export Mitigation Summary

Online Help/Resource

Online Help

Legend

- Red: > 11 ft.
- Yellow: >3 ft. but <= 11 ft.
- Green: <= 3 ft.
- Black: Penetrates 30:1
- Red X: TERPS High Risk
- Yellow Circle: TERPS Medium Risk
- Green Star: TERPS Low Risk

Penetration Surface  All

RUNWAY36 20:1 D

FAA Ortho Imagery  
 TERPS Analysis

Target Object

Runway: 36  
AMSL: 78  
Type: TREE  
Slope: 20:1  
Source: TERPS Analysis  
PenValue: 17.31  
ObjectID: KPWMT0642

Edit

Create New Object

Tools

Relocate to Airport  
Download KML Files  
Upload TERPS CSV  
Ruler

TREE	
Object Identifier	KPWMT0642
Airport Identifier	PWM
Runway Designator	36
Obstacle Type	TREE
Slope	20:1
Penetration Value	17.31
Latitude	N 43 38 17.14
Longitude	W 70 18 8.07
Elevation	78
Risk Level	High
Obstacle Lit	NO
Marking Feature Type	NOT DEFINED
Accuracy Code	1A
Source	TERPS Analysis
Original Source Stamp	2014-05-30 10:51:34.128886-04

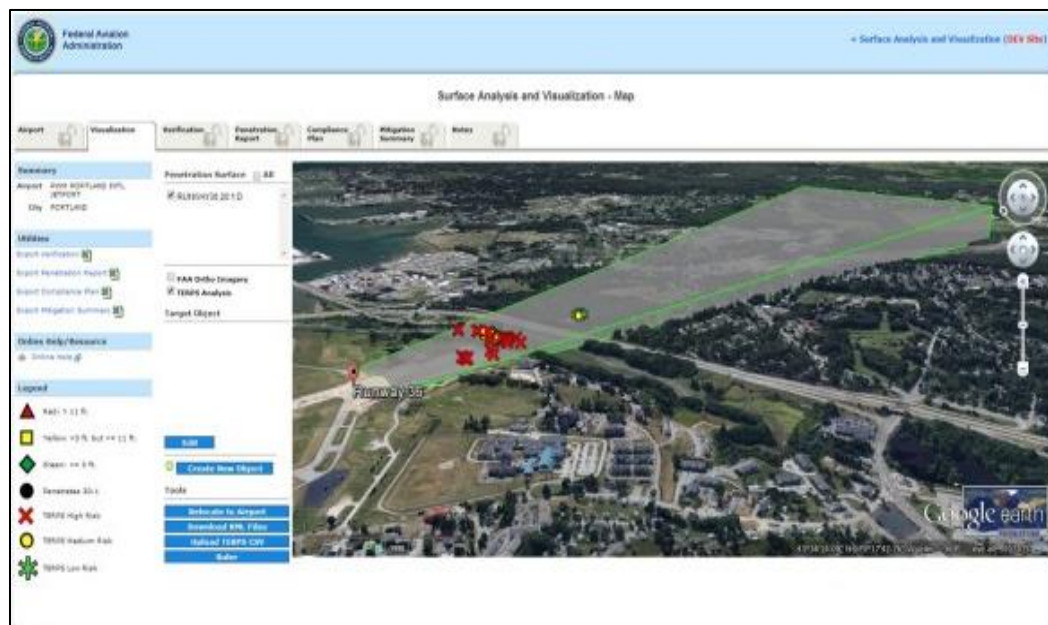
Google earth

43°37'55.24" N 70°18'27.26" W elev 90 ft eye alt 1444 ft



# Airports GIS SAV Tool Update

- **Updates planned:**
  - Modifications to tool to align with 20:1 assessment period
  - Ability to identify vegetation (trees) below surfaces to plan for future growth impact
  - Future updates to include additional surfaces



# Thank You! Questions?

